



COMPANY PROFILE

TABLE OF



CONTENTS

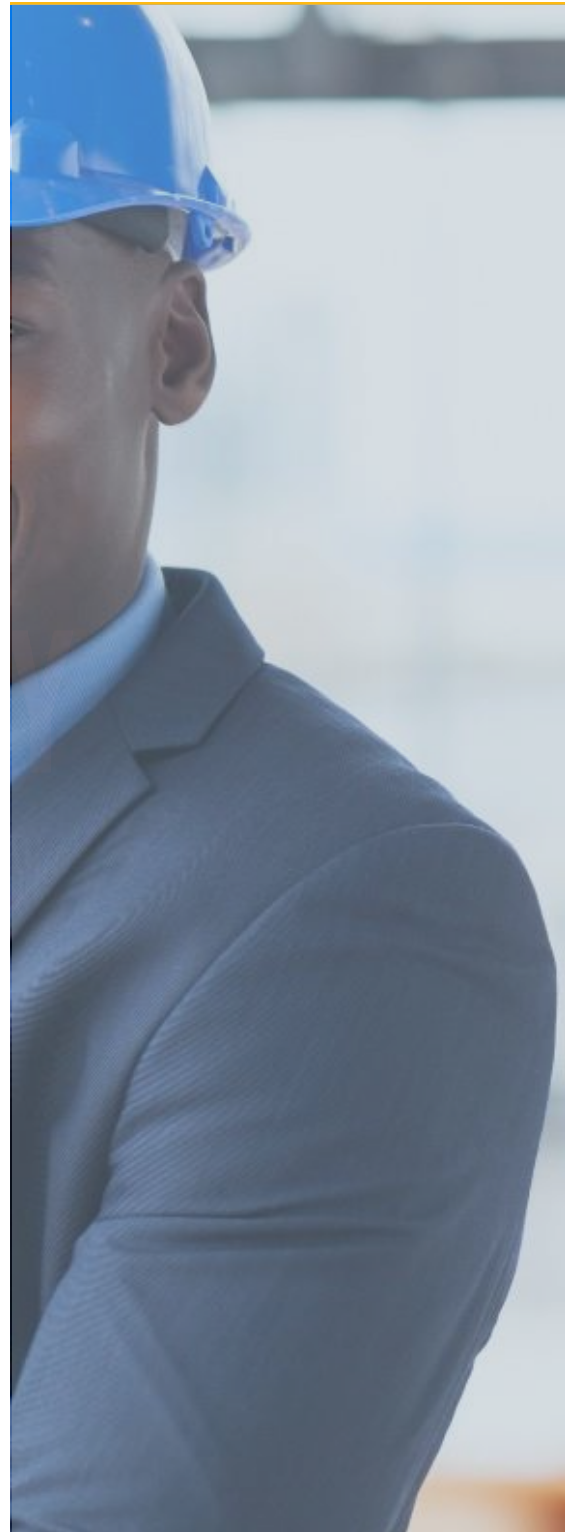


TABLE OF CONTENT S

- INTRODUCTION 4
- BACKGROUND 6
- BUSINESS SEGMENTS 9
- BUSINESS OPERATION 11
- PROJECT QUALITY PLAN 12
- QUALITY ENVIRONMENTAL POLICIES 18
- ENVIRONMENTAL MANAGEMENT POLICY STATEMENT 19
- HEALTH & SAFETY POLICIES 20
- ORGANIZATIONAL CHARTS 21

INTRODUCTION

DESIGN PLUS. is a Mechanical, Electrical and Plumbing contracting company in Bangalore specializing in design, build, construct, supply, install, service, upgrade, maintenance of Electro-Mechanical Systems & Networks, Utilities and Equipment. Our scope covers Engineering, Documentation, Submittals Approval, Shop drawings, Coordinating Drawings, Commissioning, Start-Up, As-Built ACC. To Contract Programs, Project Time Schedules – Complying Consultant Specifications, International Standards & Codes, Safety & Quality Plans.

Our Business activity extends to cover all areas of electro-mechanical works including but not limited to:

- Electrical Networking & Works
- Low Current Networks
- Tele-Communication & Security Systems
- Piping & Plumbing Works
- HVAC Works
- Ducting & Thermal Insulation Works
- Fire Fighting Works
- Industrial Installations Works

DESIGN PLUS. works with the highest efficiency and in accordance with the latest technologies in conformity with international standards of quality, security and safety. we utilize trained and experienced staff for the implementation and delivery of projects with commitment to contract terms, conditions, and preservation to the environment.

DESIGN PLUS. has specialized Departments and each department is divided to cover the different types and styles of property, plants, buildings and construction. The divisions based on distinctive features are as follows:

- Residential & Housing
- Commercial & Businesses
- Administrative & Organizations
- Governmental & Public
- Touristic & Hotels, Resorts
- Educational & Cultural
- Trade Centers & Malls, Hyper
- Sport & Clubs
- Industrial & Factorial
- Sites & Open Areas

We execute all projects in accordance with technical and financial strategies to fit the distinctive character of the construction projects and to achieve the maximum benefit for our customers.

**AN MEP ENGINEERING FIRM DEDICATED TO
MEET THE SPECIFIC NEEDS OF ANY PROJECT.**

BACKGROUND

DESIGN PLUS. Is a major player in Electro-mechanical fields has a good C.V for Supplies and Turnkey Projects and well known customers in the Bangalore market.

Our Primary purpose is to complete the supply, install, service and upgrade chains in the Electro

- Mechanical fields. With our staff experience and technical know-how,

We have become a one stop shop for our clients' total Electro-

Mechanical needs.

Within a very competitive position, this is the result of high efficiency and full autonomy in phases of:

- PLANNING COORDINATION
- ENGINEERING PERSONALITY
- QUALITY CONTROL

We are capable of offering full range of Contracting, Engineering Services in the fields Energy, Electrical, Lighting, Electro-mechanical (MEP), low current systems, Safety & Security, Measurements & Meters, Motors, Generators, Pumps, Water, Drainage, Plumbing, Pipe lines & Fittings, Marking, Fencing and Automatic Control, BMS & Automation, HVAC systems, Ducting., Chillers.

Every day, DESIGN PLUS offers (Optimum & Economical) Quotes to its customers, required for MEP Services & Solutions according to approved standards and an ever wider range of Products & Services.

OUR VISION

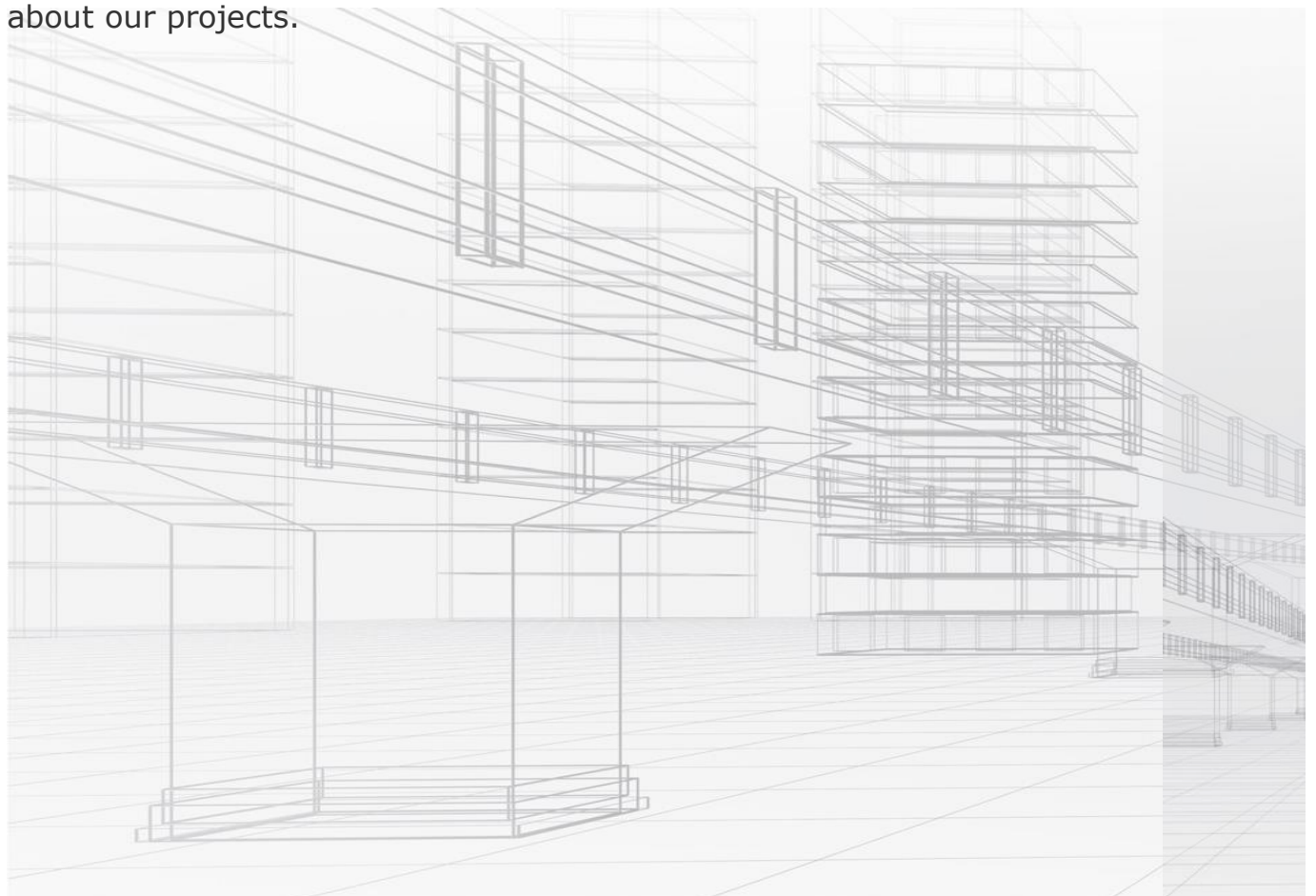
To become one of the leading and most reliable MEP contracting companies in INDIA.


OUR MISSION

Guided by our vision we shall deliver high-quality, cost-effective projects on schedule and enhance our client's satisfaction through continuous improvement of our business practices in terms of safety, quality, service delivery as well as sound environmental awareness policies.

PROJECTS

Kindly refer to our website www.designplus.ind.in for more information about our projects.



The background of the page features a construction site at sunset. The sky transitions from a deep purple at the top to a bright orange near the horizon. In the foreground, the silhouettes of construction workers are visible against the bright light. One worker stands prominently on a structure, while others are partially visible behind him. Several vertical rebar rods are also silhouetted against the sky. The overall composition is dynamic, with geometric shapes and strong contrasts.

WE BRING
LIFE
TO GREAT
STRUCTURES

BUSINESS SEGMENTS

ELECTRICAL

- POWER DISTRIBUTION SYSTEMS
- LIGHTING CONTROL
- POWER GENERATION
- LOW CURRENT SYSTEMS
- TELEPHONE & DATA SYSTEMS
- HOME AUTOMATION
- CCTV
- FIRE DETECTION & ALARMS
- ACCESS CONTROL SYSTEMS
- AUDIO / VIDEO INTERCOM SYSTEMS
- P.A. SOUND SYSTEMS



PLUMBING & PUBLIC HEALTH ENGINEERING

- HOT & COLD WATER SUPPLY SYSTEM
- WATER FILTRATION SYSTEM
- IRRIGATION SYSTEM
- SWIMMING POOL
- DRAINAGE
- SANITATION
- RAIN WATER
- SEWAGE TREATMENT
- LPG/CNG SYSTEM





HVAC INSTALLATION & DUCTING SYSTEMS

- G.I & P.I DUCTING INSTALLATION SYSTEM
- CHILLED WATER PIPING SYSTEM
- PACKAGE UNITS, D X UNITS AND FAN COIL UNITS
- INSTALLATION
- VENTILATION SYSTEMS
- ECOLOGY UNIT INSTALLATION SYSTEM
- KITCHEN HOOD EXHAUST AND FRESH AIR SYSTEM
- CHEMICAL FLUSHING AND 3RD PARTY TESTING
- REPORTS
- AIR BALANCEING SYSTEM AND CERTIFICATIONS



FIRE FIGHTING & FIRE ALARM INSTALLATION SYSTEMS

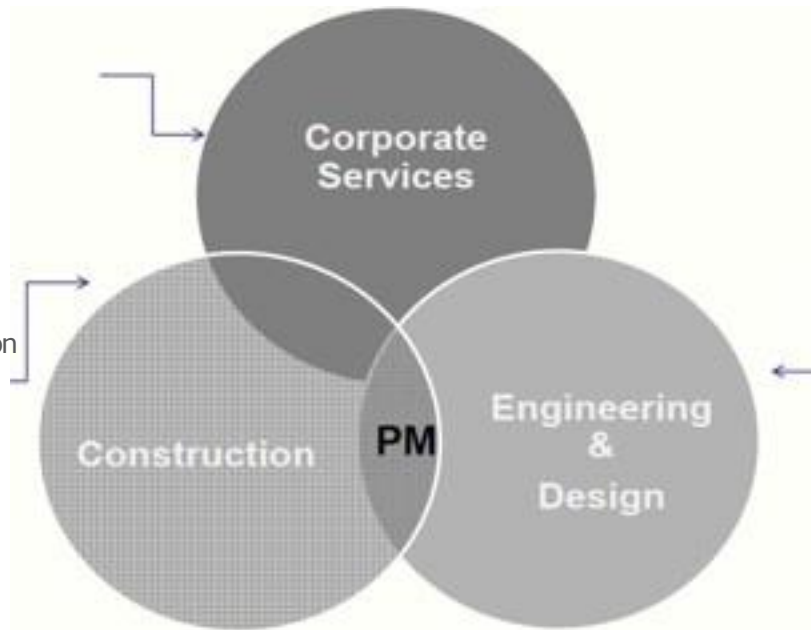
- FIRE FIGHTING - SPRINKLER INSTALLATION & MODIFICATION SYSTEM
- FIRE ALARM - INSTALLATION & MODIFICATION
- FACP PROGRAMMING, TESTING AND COMMISSIONING
- EMERGENCY / EXIT LIGHTING SYSTEM
- CIVIL DEFENSE APPROVALS & EHS CERTIFICATION.
- FIRE SUPPRESSION SYSTEM



BUSINESS OPERATIONS

OPERATIONAL ACTIVITIES

- Corporate Policies
 - Estimation
 - Commercial
 - Procurement
-
- Contract Administration
 - Expediting
 - Safety
 - Cost Control
 - Quality Control
 - Supervision



- Architectural Design
- Shop Drawings
- System Design
- Draughting

PROJECT MANAGEMENT



• Design and planning of projects/plans

• Detailed design of mechanical and electrical component

• Civil guide layout and general arrangement drawing

• Determination of all key component by:

» Technical specification

» Interface definition and management

» Supplier evaluation

» Documentation

• Mainly party manufacturing

• Manufacturing inspection

• Long-term relationship with keys

• Own process and product knowledge

• Lead engineering function construction

• Erection of electromechanical

• Control of key plant construction milestone

• Knowledge of local market and

• Reliable constructions partners

• Other constructions activities such as civil works in all house

• Process knowledge and complex system interaction control

• Detailed knowledge of plant and keys technology use

• Start-up and test run

• Spare parts stocks and service management

• Short reaction time in case of plant malfunction

• Maintenance and schedules

• Plant optimization

• Operations

• Applies in IWP project ONLY Varies from one contract to others.

PROJECT QUALITY PLAN

PURPOSE & SCOPE

The purpose of this quality plan is to define specific key requirements related to quality performance and ensures a thorough understanding of such by all project parties concerned.

Through PQP awareness and implementation the performance of the engineering, procurement construction and support functions may effectively and efficiently achieve their objectives and provide the Client with a Project that fulfills their quality requirements and expectations.

The PQP is supplemental to DESIGN PLUS. Quality Management System (QMS) and provides the Mechanism to link specific requirements of the Client / project to those of DESIGN PLUS. quality system.

In summary the PQP details the activities and responsibilities related to:

- Mobilization
- Engineering
- Procurement and Material Management
- Planning
- Execution
- Coordination for Major Subcontractors and Specialists
- Quality Control

And ensuring that these related activities are planned, implemented and controlled and their progress and Effectiveness is monitored. The above summarized and referenced key activities are further expanded upon within the following PQP

PROJECT IMPLEMENTATION

Necessary project planning and controls shall be established as part of the developed DESIGN PLUS.

Quality Management System and as appropriate the quality plan refers to this documentation under the key Activity headings within this section.

1. MOBILIZATION

Mobilization is defined as the period starting from contract award and continuing until all Construction Support facilities and infrastructure is complete. Key activities and controls to be established are:

- Programs - design / procurement / construction
- Plant and equipment approved budget
- Organization and staff resources
- Document control system
- Procurement tracking system
- Project Quality Plan (including method statement scheduling)
- Project Safety Plan
- Setting up of site offices, accommodation, temporary works.
- Initiation of early temporary or permanent work materials procurement

2. ENGINEERING

Review of contract drawings, specifications obtain / provide clarifications, coordinate among all related Disciplines and produce shop drawings within performance parameters. Key activities and controls to be established are listed below:

- Shop Drawings
- Production program
- Organization of engineering personnel
- Identification, notification and implementation of changes
- Drawing submittal

3. PROCUREMENT AND MATERIAL MANAGEMENT

To prepare technical packages comparisons for permanent materials and to secure competent and reliable sources for procurement. Key activities and controls to be established are:

- Procurement program
- Preparation of material submittal for Client approval in accordance with the terms of contract agreement, contract scope of work, approved drawings and specifications
- Approved material deliveries to the project warehouse
- Procurement tracking report on suppliers

4. PLANNING

To develop planning schedules, monitor, accommodate changes and report progress. Key activities and controls to be established are:

- Mobilization program covering all aspects of mobilization, design, procurement and early construction activities
- Detailed construction program
- Program review
- Work package program for subcontractors
- Program Monitoring and control

5. EXECUTION

Execute the construction program within the set performance parameters defined by approved shop drawings, approved material submittals and approved quality controls. Key activities and controls to be established are:

- Short term programs to direct and control the works
- Weekly productivity reporting /Planned vs. Actual Progress
- Weekly procurement reporting
- Formal pre-qualification of subcontractors and suppliers
- Weekly design progress reporting
- Method statement schedule and update as necessary
- Inspection and test planning (Process Control Sheets)
- Monthly quality performance reporting
- Monthly safety performance reporting
- Monthly update of the contract program

6. COORDINATION OF MAJOR SUBCONTRACTORS AND SPECIALISTS

Coordination of technical matters, material procurement deliveries to site and site progress. Key activities and controls to be established are:

- Monitor material and drawing submittals and timely processing of such with client for approval
- Coordination with internal / external parties to ensure potential problems are lighted and reported.
- Monitor and report on progress and performance at scheduled weekly progress meetings

7. QUALITY CONTROL

To carry out the QC activities required for achieving compliance with defined plans and specifications through the organization of respective works on site and monitoring quality activities. Key activities and controls to be established are:

- Coordination of the review of subcontractors /supplier quality related documentation and QA / QC resources
- Preparation and monitoring of defined process control documentation , inspection and test planning and associated work execution

1. ENGINEERING

1. PROJECT COORDINATOR (H.O.)

- Familiarization and awareness of project design drawings and specifications requirements
- Production of the project civil shop drawings through assigned drafting personnel
- Coordinate with other disciplines in the Project Engineering function to ensure compatibility of project works
- Maintain continuous coordination with construction team to ensure understanding of project's design and specification details.
- Participate in meetings with other Project disciplines, subcontractors etc and as required resolve engineering queries or issues raised.
- Collaborate in producing project progress reporting, forecasts, and as required special engineering reports.
- Coordinate / liaise with other engineering trades especially the Specialist subcontractors (MEP, Cladding, Architectural firm, etc) to resolve issues on interfaces during the Design and Construction stages.
- Perform other essential project engineering / associated duties agreed and assigned by project management.

2. STRUCTURAL ENGINEERING (H.O.)

- Review project structural drawings and specifications.
- Develop the structural shop drawings in accordance with the specifications, designs, and in coordination with all other specializations (i.e. architectural, civil, electrical and mechanical).
- Review structure design for modification or change as and when required.
- Collaborate in preparing project studies, reports, forecasts and special engineering reports as and when requested.
- Perform other essential project structural engineering / associated duties agreed and assigned by management.

3. DRAFTING PERSONEL (HO & SITE)

- Suitably qualified and experienced assigned personnel shall as applicable prepare CAD shop drawings for set architectural / mechanical / electrical / structural work assignments.
- Produce drawings in varying degrees of detail utilizing CAD files and maintaining uniform and professional standard of presentation utilizing approved software.
- Incorporate input given by the Architects / Engineers into the relevant drawings.
- Perform back-up procedures as per defined Company instruction.
- Record and prepare as built drawings from various project sources
- Perform all duties (related to the nature of the job) assigned by his immediate supervisor.

MEP (MECHANICAL ELECTRICAL AND PLUMBING)

MEP COORDINATOR

- Follow up the progress of;
 - Construction of works & compliance with construction schedule.
 - Drawings submittals & Approval thru weekly drawings status report.
 - Materials submittals & Approval thru weekly materials status report.
- Review & Study the Technical submittals & Shop drawings received from MEP sub contractor, any comments to be sent immediately to the sub contractor prior to forward the same to consultant for approval.
- Review the received daily works report from sub contractor and to compare the contents with Executed works at site.
- Review the Staff & Equipments daily report received from the sub contractor in order to check whether it is match with submitted organization chart and to be sure from available tools & equipments are enough to execute the works.
- To avoid any delay to MEP sub contractor works which will give reason to the sub contractor to claim for delay, should cover officially any delay to DESIGN PLUS. works caused by sub contractor & report it to the project manager..
- Follow up the QC & inspection of executed works & received materials to site and be sure it is comply with approved technical submittal and contract specification, Also interconnection between Client / Consultant & Sub-Contractor
- Review the submitted Monthly payments from the Sub Contractor prior to forward this payment to DESIGN PLUS. - Q.S. Should report directly to the project manager administratively and functionally.

PLANNING

SITE PLANNING ENGINEER

- Study contract documents and obtain complete information necessary to develop detailed construction programs.
- Prepare detailed programs / coding structure to the level of details agreed with the Chief Engineer.
- Monitor at agreed intervals actual site progress of the works and update the master program logic to reflect any variance, V.O issues, changes in sequence/ method, etc.
- Participate in the preparation of the necessary programs as required (Weekly, Short term/ periodic etc)
- Prepare various reporting and statistics as requested by the Chief Engineer.
- Ensure traceability of planning records/ programs, progress reporting is maintained and complete backed filing and indexing.
- Perform all duties (related to the nature of the job) assigned by the Chief Engineer.

SITE ENGINEERS

- Supervise crews of laborers in their performance of assigned work.
- Review drawings and clearly communicate technical issues to the various trades.
- Apply schedules, procedures and related work rules that meet productivity, quality and safety requirements.
- Report to Project Incharge on any problems related to the absence of manpower, materials or equipment that relate to time, cost, quality, safety etc
- Assist the Project Incharge in the preparation of construction methods, schedules and manning charts.
- Perform general functions inherent to all supervisory jobs on site operations.

QUALITY POLICY STATEMENT

DESIGN PLUS. firmly believes that our systemic and business processes, professionally followed and well accomplished by our enthusiastic staff, clearly indicates our care and continuance in providing high levels of our quality works, customer service and customer satisfaction.

DESIGN PLUS. strives to consistently providing quality engineering with reliable and efficient maintenance services, subject to total compliance on all its requirements, and where possible exceeds the expectations of our customers.

DESIGN PLUS. focuses on training and development of its personnel through flexibility and adaptability to service the overwhelming transforming business environment, by innovative working techniques and continuously improve the efficacy of our design and building management systems.

We will ensure that all our staff having good knowledge and understanding of our quality objectives, working towards meeting the system requirements, and committed to developing processes and promoting new ideas.

To address and achieve and ongoing progress in quality service and customer satisfaction, DESIGN PLUS. will maintain, review and revise its quality objectives and targets annually

DESIGN PLUS. will conduct quality audits and reviews on all operational activities at least once a year, and will allocate human, financial and other resources appropriately in order to achieve targeted results.

Currently, DESIGN PLUS. is committed with established quality management system, both administrative and operational, to work towards continuous improvement on its quality performance.

ENVIRONMENTAL MANAGEMENT POLICY STATEMENT

DESIGN PLUS. aims at preserving the environment for our future and provides its support to free the planet from CFCs. We will identify and better manage our environmental risks and opportunities.

DESIGN PLUS. closely observes and works with employees, clients, suppliers and other related organizations to upgrade our enduring operational strategies and working procedures to best practice standards.

DESIGN PLUS. prime target operationally is to eliminate our negative environment impact by whatever possible minimizing the wastage, and prevent the usage of environmentally unfriendly products, while endeavoring to maximize our positive environmental impact and better living conditions.

We will keep up and maintain the environment around us clean and safe, and regularly monitor, raise alarm and respond to any hazardous environmental situation observed.

DESIGN PLUS. ensures that its activities will always comply with the Government's Environmental Policy, follow and maintain them in all our administrative, operational, logistics and site areas of our projects.

DESIGN PLUS. affirms that all managerial and supervisory staff are accountable for environmental performance in their area of responsibility.

HEALTH AND SAFETY POLICY STATEMENT

DESIGN PLUS . firmly believes in the significance of health and safe working practices of our employees, as it forms the fundamental part of the effectiveness and efficiency of our management. Furthermore, as an organization and the employer, we do acknowledge our commitment, so far as is reasonably, in ensuring for the health and safety of our employees, public health and not to endanger our environment.

DESIGN PLUS. recognizes that in our duties and responsibilities to our employees, the foremost requirement is providing and maintaining hygienic conditions, healthy environment and safe work practices in addition,

DESIGN PLUS. also comprehends the relationship between efficiency and safety in terms of cost control, losses, ill health and the lost time injuries due to accidents and near misses

Every managerial and supervisory staff shall apply the organizations safety policy and all legislative provisions in their areas of control and execute all reasonably practicable measures to provide a healthy and safe working environment.

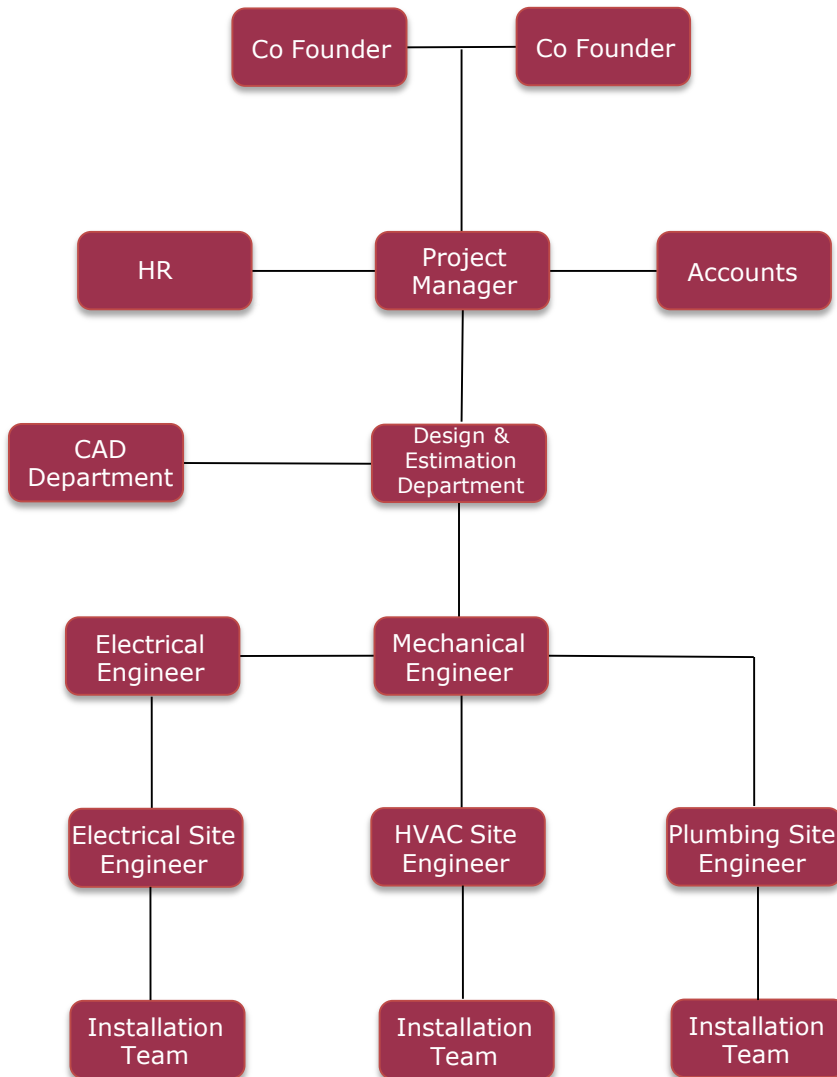
We also consider that every employee in our organization has an individual responsibility ensuring strict adherence to company's and all legislative safety requirements and it is their obligation working with the management in maintaining good standards of Health & Safety.

Furthermore, DESIGN PLUS. will conduct induction program and provide training and instruction to enable employees to carry out their duties in a safe and efficient manner, and as well make all necessary devices and protective equipment issued and supervise its use as required and will involve staff on all discussions to improve Health & Safety.

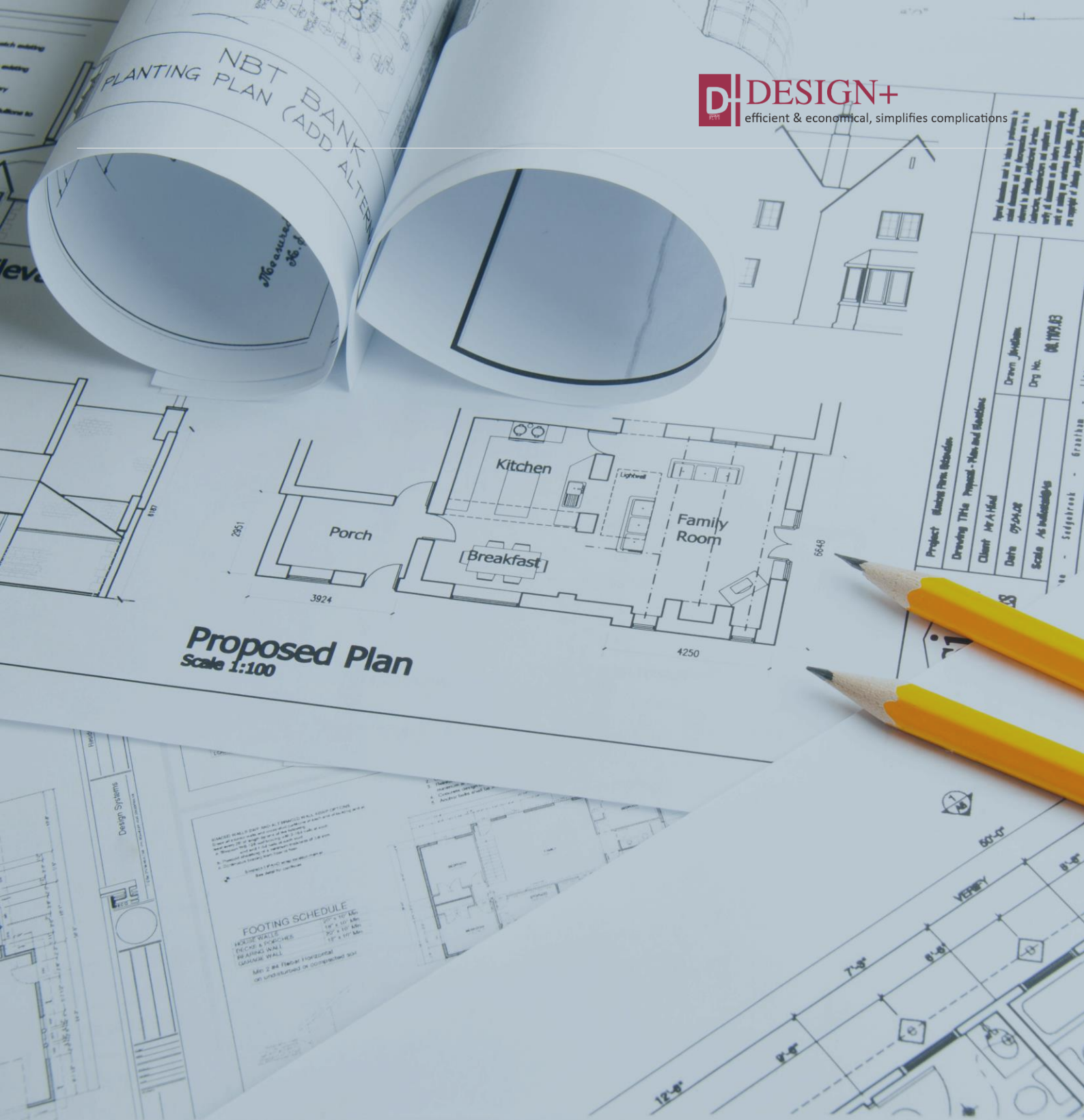
Our statement of general policy is:

- to provide adequate control of the health and safety risks arising from our work activities
- to consult with our employees on matters affecting their health and safety
- to provide and maintain safe plant and equipment
- to ensure safe handling and use of substances
- to provide information, instruction and supervision for employees
- to ensure all employees are competent to do their tasks, and to give them adequate training.
- to prevent accidents and cases of work-related ill health
- to maintain safe and healthy working conditions; and
- to review and revise this policy as necessary at regular intervals.

ORGANIZATION CHARTS







Project: *Blazing Pine, Gurgaon*
Drawing Title: *Proposed - Plan and Elevation*
Client: *M/A-Hud*
Date: *07/04/08*
Scale: *As Indicated*
Drawn: *Jadhav*
Dwg No.: *04.1103.03*

FOOTING SCHEDULE	
HEAVY WALL	12" x 12" MIN.
TRUCK & TRUCKS	20" x 12" MIN.
BEARING WALL	12" x 12" MIN.
GENERAL WALL	12" x 12" MIN.

Min 2 #4 (Equal Horizontal)
on undisturbed or compacted soil

" ... TOGETHER WE BUILD A BETTER FUTURE "



CONTACT US

PHONE NUMBER

+91 (0) 984450894

+91 (0) 6363151057

ADDRESS

573/A, 6th cross, vinayaka
layout, Nagarbhavi 2nd stage
Bangalore-560072
Karnataka
India

MAIL US

info@designplus.ind.in

WEB SITE

www.designplus.ind.in